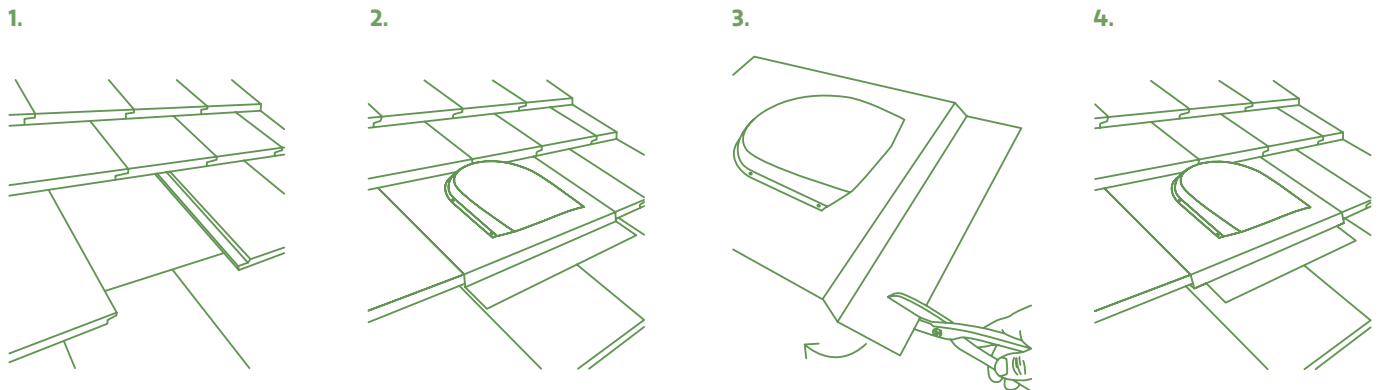


# Tile Roof Installation

1. Select the desired position along the ridge capping for the vent.
2. Remove a tile from the third row down from the ridge capping (or lower).\* Ensure that the proposed position is between roof rafters. (fig 1)
3. Cut any insulation/sarking in a cross and fold back to create a 160mm opening size.
4. Remove the components from the carton.
5. Push the base under the tiles above the opening created in the roof. Centre the hole in the vent base over the opening. Bend the top end of the base up to meet the underside of the tiles above. Dress the base into the shape of the tiles. Bend the bottom edge of the flashing down to seal against lower tiles. (fig 2)
6. (Optional but recommended.) Make 2 vertical cuts in the vent base approx. 50mm in from the bottom left and bottom right corners, forming 2 strips. Bend the 2 strips down each side under the tiles to assist in securing the vent. Silicone may be used under the sides and front of the base. (fig 3 & 4)
7. From inside the roof, attach the tile installation strap to a timber tile batten or rafter on the lower side of the hole, using a nail or screw (not included).
8. Push in and twist either neck or adapter into the opening of the vent to clip into place.
9. Attach duct to the neck or adapter with a worm drive clamp or duct tape.

**These items may be required:** Knife (to cut sarking/insulation) + Tin snips (for cutting base) + Silicone sealant (for base) + Nail and hammer OR screw and screwdriver (to attach tile installation strap) + Duct tape or worm drive clamp (to attach ducting)



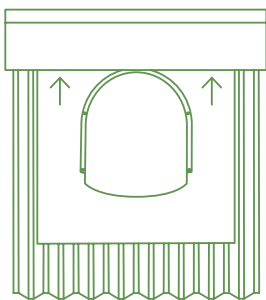
\*Note: The removal of a tile higher than this may damage the integrity of the ridge tiles and is not recommended.

# Metal Roof Installation

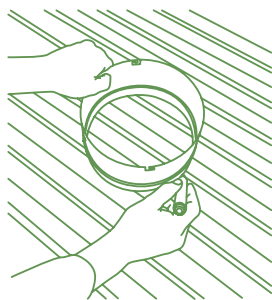
1. Select the desired position along ridge capping for the vent.
2. Remove the components from the carton.
3. Remove the tile installation strap with tin snips prior to installation (Strap is not required for metal roofs.)
4. Place the vent in position with top edge of the base slid under the ridge capping. Ensure that the vent base covers the corrugations or ribs equally and the desired roof penetration position is between the roof rafters. (fig. 1)
5. Mark a circle of 160mm diameter using the neck as a template. (fig. 2)
6. Cut hole (penetration) and trim away any insulation/sarking or membrane.
7. Push in and twist either neck or adapter into the opening of the vent to clip into place.
8. Place vent back into position under capping and over hole (with neck or adapter in hole). Foil tape (not supplied) may be used to seal the penetration opening.
9. Using tin snips, cut the bottom edge of the base in the shape of the corrugations and bend down at front. (fig 3.)
10. Bend base down at the sides of the corrugation.
11. Secure the base with self-tapping screws. We recommend 3 screws down each side and one on every second ridge of the corrugation. Approximately 9 are required (not included). (fig 4.)
12. Attach ducting to the neck or adapter with a worm drive clamp and/or duct tape.  
(Note that 20mm clearance is required between roof covering and duct)

**These items may be required:** Pen (for marking hole) + Tin snips (for removing tile installation strap and trimming base)+ Knife (for cutting insulation/sarking) + Saw (for making roof penetration) + Foil tape (to seal roof penetration) + Self-tapping screws (to secure vent)+ Duct tape or worm drive clamp (to attach ducting)

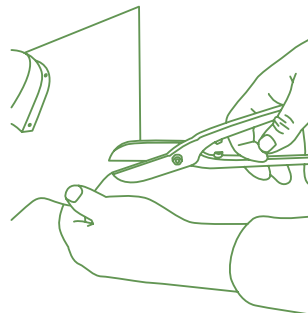
1.



2.



3.



4.

