



Contact Details

NEW SOUTH WALES

P | 02 9794 1111
E | info@humedoors.com.au

WESTERN AUSTRALIA

P | 08 9470 1800
E | hdtwa@humedoors.com.au

QUEENSLAND

P | 07 3489 6200
E | sales@humedoorsqld.com.au

NORTHERN TERRITORY

P | 08 8932 3733
E | hdtnt@humedoorsqld.com.au

VICTORIA

P | 03 9799 6888
E | hdtvic@humedoors.com.au

TASMANIA

P | 03 6774 9100
E | tassales@humedoors.com.au

SOUTH AUSTRALIA

P | 08 8280 2000
E | hdtsa@humedoors.com.au

BALANCE

SLIDING DOOR SYSTEM

Installation Instructions

www.humedoors.com.au

100% Australian Owned

BALANCE SLIDING DOOR SYSTEM



100% Australian Owned

www.humedoors.com.au



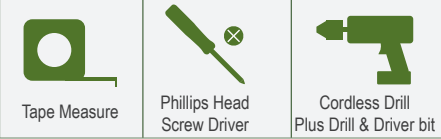
BALANCE SLIDING DOOR SYSTEM

INSTALLATION INSTRUCTIONS

COMPONENTS SUPPLIED WITH BALANCE SLIDING SYSTEM:

- 1 x Head unit with track, timber pelmet & wheels
- 2 x Timber side jambs
- 2 x Fixed side door panels with floor tags
- 2 x Sliding door panels with hanger brackets
- 8 x Assembly support blocks
- 2 x Aluminium door guides
- 1 x Pack of fixing screws

TOOLS REQUIRED

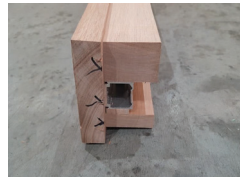


1. ASSEMBLE FRAME

Place head track pelmet side down. (fig.1)

Lay out timber side jambs and fixed side door panels on support blocks. (fig.2)

Fix side jambs to head with screws provided (fig.3)



(fig.1)



(fig.2)



(fig.3)

2. INSTALL FIXED PANELS

Lay the side panels onto jamb with metal tags down (fig.4)

Fasten screws through pre-drilled holes through head into the top of fixed panels (fig.5)

Fasten screws through jambs to sides of panels (fig.6)



(fig.4)



(fig.5)



(fig.6)

3. INSTALL FRAME INTO WALL

Once the system has been prepared correctly, you can now lift the frame into the opening. The fixed side panels should be to the outside of the opening (fig.6)

Before fixing the system into the opening, it is very important that it is plumb, level, square and without twist. Use wedges or packers between the frame and wall structure to ensure all these important elements are correct (fig.7-8)

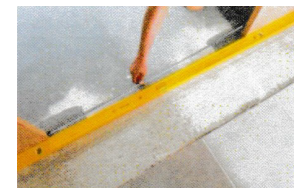
Screw / Nail system to wall opening



(fig.6)



(fig.7)



(fig.8)

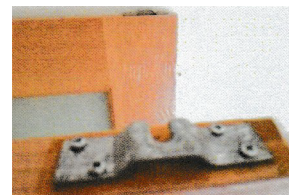
4. INSTALL SLIDING PANELS

Unscrew pelmet and remove to access wheel carriages in track (fig.9)

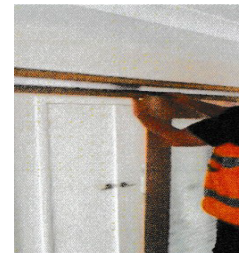
Attach sliding panels to wheel carriages in track, tighten but not completely as to leave room for adjustments (fig.10-11)



(fig.9)



(fig.10)



(fig.11)

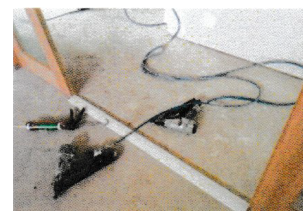
5. ATTACH DOOR GUIDES & FIX UNIT TO FLOOR

Slide doors out of the way to allow for access. Attach aluminium door guides to bottom of fixed panels (fig.12)

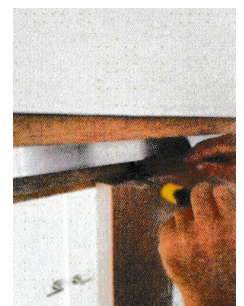
Attach fixed panels to floor using the metal floor tags attached

Adjust panels so they glide smoothly and meet in the centre. Tighten wheel carriages (fig.13)

Re-fit pelmet with screws



(fig.12)



(fig.13)