

cowdroy

BARN DOOR

DECORATIVE SLIDING DOOR HARDWARE | 90KG PER DOOR



FEATURE PIECE | DIVIDER WALLS | INTERNAL DOORS





DECOR SYSTEM FOR THAT UNIQUELY RUSTIC LOOK

Cowdroy's newly upgraded range of Barn Door kits now offers a top-fix option as well as the classic side-fix option.

Featuring a steel track, large rollers and a steel roller guide, this latest range combines smooth and quiet performance with robust design and pleasing aesthetics.

Catering for doors up to 1500mm wide and 90kg in weight, the new Barn Door range is perfect for feature doors in pantries, bedrooms, hallways and room dividers as either a single door or bi-parting double doors.

APPLICATION

Suits:	1 door
Max. Door Width:	1500mm wide
Door Thickness:	34-44mm



Internal



Single



Bi-Parting

COLOURS



Black



Satin Nickel

FEATURES

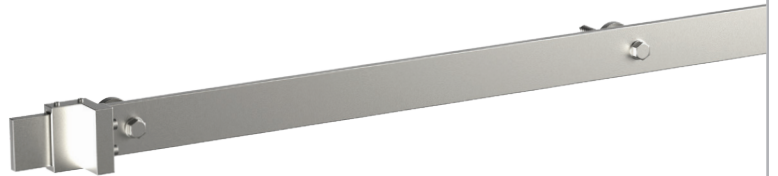


HEAVY DUTY ROLLERS

Robust hangers with large ergonomic wheels for door weights of up to 90kg. Available in side and top fix options.

STRONG, PRE-DRILLED & SIMPLE TRACK

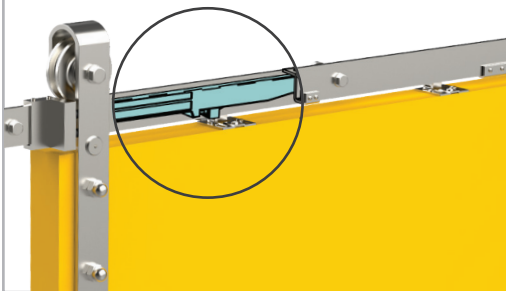
Satin Nickel & Powder Coat Black pre-drilled steel track with wall mount spacers and bolts.



STEEL ROLLER GUIDE & ADJUSTABLE DOOR STOPS

Heavy duty floor-mounted steel roller door guide for improved strength. Adjustable track-mounted door stops with rubber bumpers.

OPTIONAL EXTRAS



QUIET & SAFE SOFT CLOSE

Adding a Soft Close kit to your Barn Door offers gentle and quiet closing performance along with the safety of reducing slamming and jamming fingers. Clamp-on design allows for easier installation. Available in a pack of 2 for Soft Closing at each end of your door.

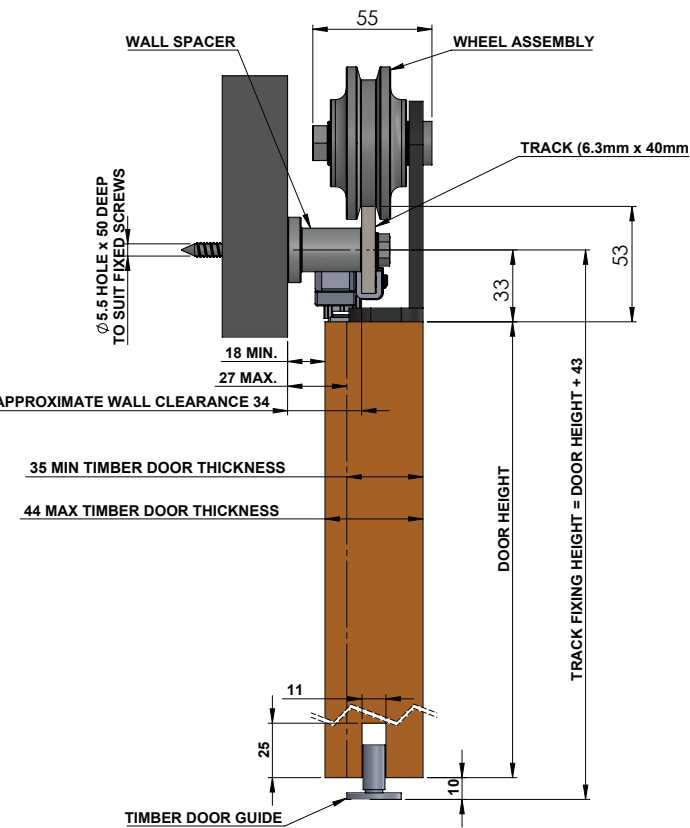
HASSLE-FREE DOOR TRACK ALIGNER

Ideal for butting tracks, this hassle-free track aligner ensures perfect alignment with simple installation - no drilling required. Available in Black and Satin Nickel.

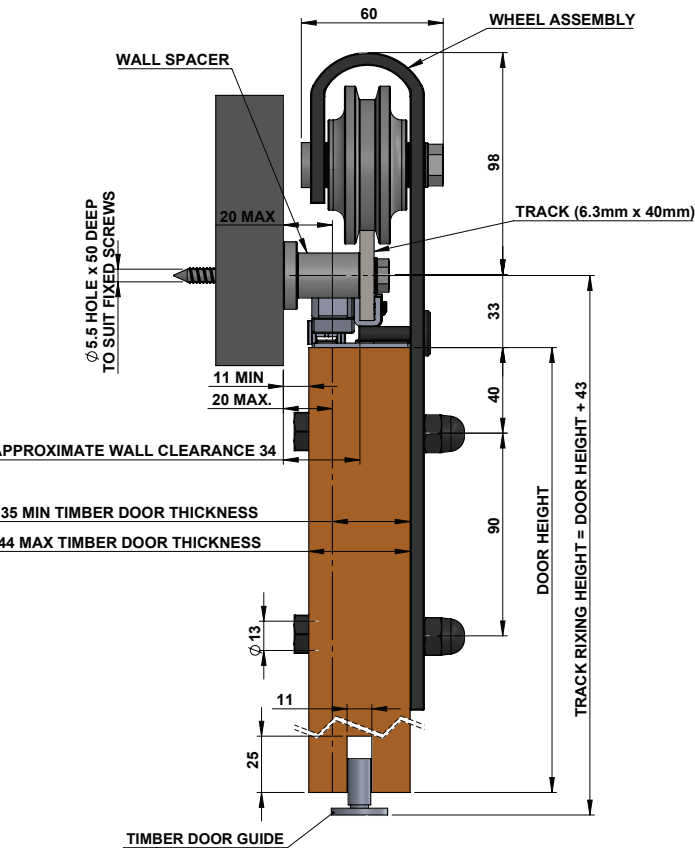


TECH INFORMATION

ARCHITECTURAL DRAWINGS



TOP FIX - END VIEW



SIDE FIX - END VIEW

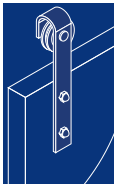
TECH SPECS

<div><div></div>Included Feature</div> <div><div></div>Optional Extra</div>			
System Type	Sliding	External door	
Max. Weight Door/Panel	90kg	Internal door	○
Door/Panel width (mm)	Up to 1500	Wardrobe doors	○
Door Thickness (mm) min.	34-44	Cupboard doors	
Track Length (mm)	2000-3000	Glass Cabinet doors	
Suits No. of doors	1	Wall mounted track	○
Track Type	Steel Black/ Satin Nickel	Top mounted track	
		Floor fixed track	
		Top hung wheel	○
		Bottom rolling wheel	
		Door side fix	○
		End pivoting	
		Centre pivoting	
		Bottom guide	○
		Top guide	
		End stop	○
		Soft-close	●
		Pelmet	

PACKAGED SETS

For Single Doors

SIDE FIXED



- BD25020BK: Doors up to 1000mm wide - Black
- BD25020SN: Doors up to 1000mm wide - Satin Nickel
- BD25025BK: Doors up to 1250mm wide - Black
- BD25025SN: Doors up to 1250mm wide - Satin Nickel
- BD25030BK: Doors up to 1500mm wide - Black

TOP FIXED



- BD25520BK: Doors up to 1000mm wide - Black
- BD25520SN: Doors up to 1000mm wide - Satin Nickel
- BD25525BK: Doors up to 1250mm wide - Black
- BD25525SN: Doors up to 1250mm wide - Satin Nickel

OPTIONAL ACCESSORIES

Sold Separately



- TT269BK: Track Aligner - Black
- TT269SN: Track Aligner - Satin Nickel



- TT25210: Soft Close Kit for Single Door - Black

INTRODUCING THE BI-FOLD BARN DOOR

With its sleek powder-coated black finish, this bi-folding system adds an elegant touch to any space. The minimalistic design perfectly complements rooms of all styles.

- Ideal for small areas
- Easy installation



TECH SPECS

Material:	Mild Steel - Powder coat - Black
Width:	1310mm Track
Doors:	Up to 4 x 300mm wide panels
Weight:	15 kg per panel
Code:	BD42213BK

HANDLES & PULLS

The Barn Door range offers complimenting pull handles and finger pulls. The pull handle sets consist of a large external pull handle and a slim internal finger pull, both color-matched to the kits which will enhance the traditional barn door aesthetic. The finger pull options offer flexibility in placement on the door, accommodating wider doors where typical handle locations might limit access.

PULL HANDLE SET



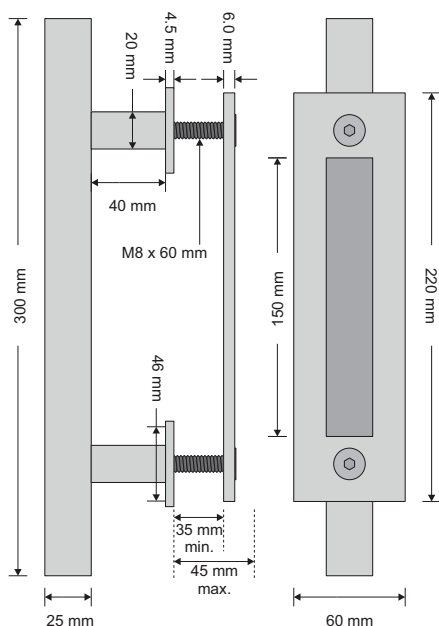
Overall height: 300mm
Overall width: 60mm
Suits doors: 35-45mm thick



BH00045BK:
Pull Handle Set - Mild steel - Black



BH00045SN:
Pull Handle Set - Mild steel - Satin Nickel



RECTANGLE FINGER PULL

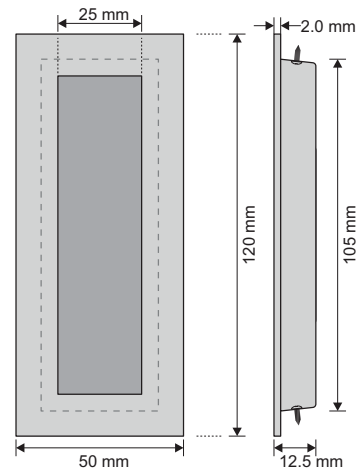
Dimensions: 120 x 50mm
Overall depth: 12.5mm



BH00104BK:
Rectangle Finger Pull - Stainless steel - Black



BH00104SN:
Rectangle Finger Pull - Stainless steel - Satin Nickel



ROUND FINGER PULL

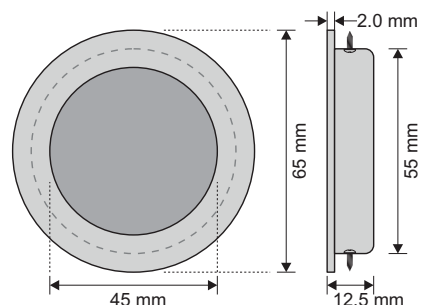
Dimensions: 65mm diameter
Overall depth: 12.5mm



BH00107BK:
Round Finger Pull - Stainless steel - Black



BH00107SN:
Round Finger Pull - Stainless steel - Satin Nickel



Cowdroy is an Australian company supplying industry leading products across residential and commercial properties.

Established in 1890, Cowdroy specialises in door tracking systems, weather seals, insect screen, replacement wheels & rollers and more products for a wide range of applications.

For all our product information visit the Cowdroy website at:
www.cowdroy.com.au

HEAD OFFICE SYDNEY

38 Redfern St
Wetherill Park, NSW 2164
Phone: (02) 9604 3000
Fax: (02) 9604 8129
Sales Fax: (02) 9609 3694

WEBSITE

www.cowdroy.com.au
www.cowdroy-insectscreen.com.au

EMAIL

sales@cowdroy.com.au

NATIONAL CALL

1800 COWDROY (1800 269 376)

Perth

1 Modal Crescent
Canning Vale, WA 6155
Ph: (08) 9455 5354
Fax: (08) 9455 5461

Christchurch NZ

19 Kilronan Place, Wigram,
Christchurch 8042
Phone: (03) 943 2060
Fax: (03) 943 2061

Auckland NZ

18 Kerwyn Ave, East Tamaki
Auckland 2013
Phone: (09) 274 7279
Fax: (09) 274 4453

cowdroy

