

# DuraDRAIN 200 Series



## SPEC PACK

### DuraDRAIN 200 Series Channel & Grate

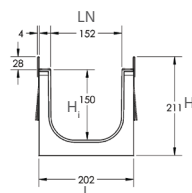
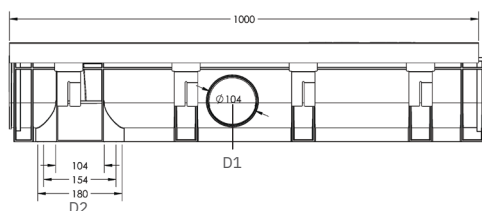
200  
SERIES

DuraDRAIN is a heavy-duty commercial and residential drainage solution, suitable for carparks, driveways and commercial areas. With Class B and Class D grates in the range, and two size channels to choose from, there is a drainage solution for any project. DuraDRAIN channel and end caps are produced using 100% recycled polymer and are manufactured in Australia by Everhard.

DuraDRAIN 200 CHANNEL VARIATIONS				
MATERIAL	CODE	CLASS	MODEL	WEIGHT
100% Recycled Polymer Channel & Galvanised Steel	81651	B	200	15.85 kg
100% Recycled Polymer Channel & Heelsafe Galvanised Steel	81652	B	200	15.32 kg
100% Recycled PP Channel & Ductile Iron Grate	81653	<b>COMING SOON</b>		23.02kg

### SPECIFICATIONS - 200 SERIES CHANNEL & GRATE

**Length:** 1000mm  
**Width:** 252mm  
**Height:** 211mm



Dimensions	
Product	200
L	252
H	211
LN	202
H	150
Outlet Diameter	
D1	Ø104
D2	Ø110, Ø160
All dimensions are in millimetres	

### PRODUCT APPLICATIONS

Driveways  
Residential & commercial carparks  
High rainfall and high waterflow areas



\*81601 pictured

### GRATE OPTIONS



Galvanised Steel



Heelsafe Galvanised Steel



Ductile Iron



Polymer channel warranty



Metal grate warranty



Class B rated grates:  
81651, 81652



Class D rated grate:  
81653



POLYMER  
**MADE FROM 100% RECYCLED MATERIALS**

If you are after Revit files or additional information, get in touch with us for more details: [marketing@everhard.com.au](mailto:marketing@everhard.com.au)

# DuraDRAIN End Caps and Grates

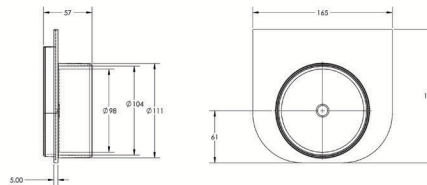


## SPEC PACK

### DuraDRAIN 150 Series End Cap

DuraDRAIN 150 End Cap  
EI Code: 81615

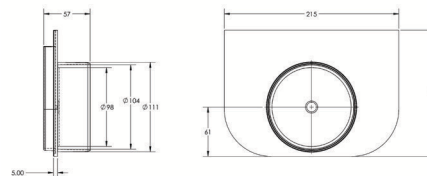
Provides an end point for the  
DuraDRAIN 150 Drainage System.



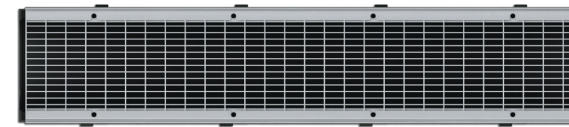
### DuraDRAIN 200 Series End Cap

DuraDRAIN 200 End Cap  
EI Code: 81665

Provides an end point for the  
DuraDRAIN 200 Drainage System.

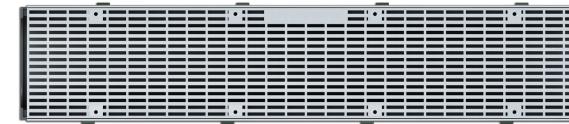


### DuraDRAIN Galvanised Grate



1000mm L x 20mm H x 150/200mm D

### DuraDRAIN Heel Safe Galvanised Grate



1000mm L x 20mm H x 150/200mm D



Complies with the following industry standards:  
Slip Resistance: Wet Pendulum Class P2 (AS 4586) Designed for Access and Mobility (AS 1428.1:2021) Load Rating: Class B (AS 3996:2019) Bicycle Tyre Penetration Resistant (AS 3996:2019)



Complies with the following industry standards:  
Slip Resistance: Wet Pendulum Class P4 (AS 4586) Designed for Access and Mobility (AS 1428.1:2021) Load Rating: Class B (AS 3996:2019) Bicycle Tyre Penetration Resistant (AS 3996:2019)

### DuraDRAIN Ductile Iron Grate



1000mm L x 20mm H x 150/200mm D



Complies with the following industry standards:  
Complies with the following industry standards: AS 4586; P2 Wet Pendulum Load rated to Class D (AS 3996:2019)

If you are after Revit files or additional information, get in touch with us for more details: [marketing@everhard.com.au](mailto:marketing@everhard.com.au)



Polymer channel warranty



Metal grate warranty



POLYMER  
MADE FROM  
100% RECYCLED  
MATERIALS

# DuraDRAIN 150 Series



## SPEC PACK

### DuraDRAIN 150 Series Channel & Grate

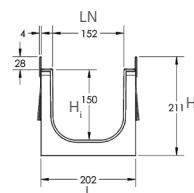
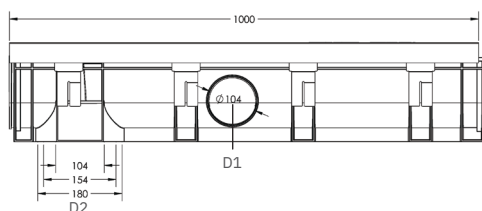
150 SERIES

DuraDRAIN is a heavy-duty commercial and residential drainage solution, suitable for carparks, driveways and commercial areas. With Class B and Class D grates in the range, and two size channels to choose from, there is a drainage solution for any project. DuraDRAIN channel and end caps are produced using 100% recycled polymer and are manufactured in Australia by Everhard.

DuraDRAIN 150 CHANNEL VARIATIONS				
MATERIAL	CODE	CLASS	MODEL	WEIGHT
100% Recycled Polymer Channel & Galvanised Steel	81601	B	150	13.20 kg
100% Recycled Polymer Channel & Heelsafe Galvanised Steel	81602	B	150	12.84 kg
100% Recycled PP Channel & Ductile Iron Grate	81603	<b>COMING SOON</b>		23.02kg

### SPECIFICATIONS - 150 SERIES CHANNEL & GRATE

Length: 1000mm  
Width: 202mm  
Height: 211mm



Dimensions	
Product	150
L	202
H	211
LN	152
H	150
Outlet Diameter	
D1	Ø104
D2	Ø180
All dimensions are in millimetres	

### PRODUCT APPLICATIONS

- Driveways
- Residential & commercial carparks
- High rainfall and high waterflow areas



\*81601 pictured

### GRATE OPTIONS



Galvanised Steel



Heelsafe Galvanised Steel



Ductile Iron



Polymer channel warranty



Metal grate warranty



Class B rated grates: 81601, 81602



Class D rated grates: 81603



POLYMER  
**MADE FROM 100% RECYCLED MATERIALS**

If you are after Revit files or additional information, get in touch with us for more details: [marketing@everhard.com.au](mailto:marketing@everhard.com.au)

# DuraDRAIN End Caps and Grates

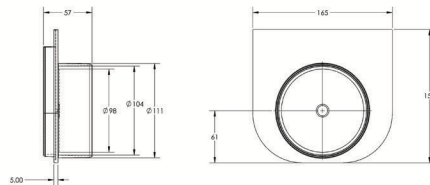


## SPEC PACK

### DuraDRAIN 150 Series End Cap

DuraDRAIN 150 End Cap  
EI Code: 81615

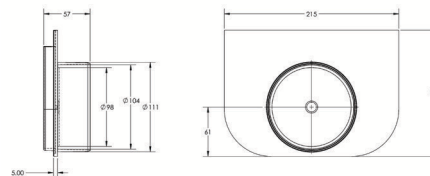
Provides an end point for the  
DuraDRAIN 150 Drainage System.



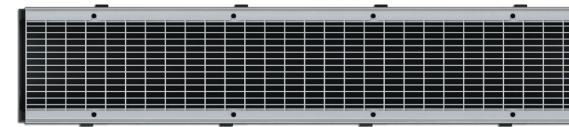
### DuraDRAIN 200 Series End Cap

DuraDRAIN 200 End Cap  
EI Code: 81665

Provides an end point for the  
DuraDRAIN 200 Drainage System.



### DuraDRAIN Galvanised Grate

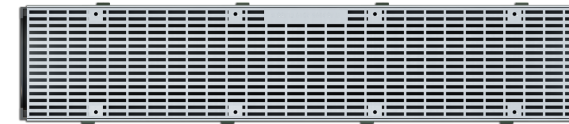


1000mm L x 20mm H x 150/200mm D



Complies with the following industry standards:  
Slip Resistance: Wet Pendulum Class P2 (AS 4586) Designed for Access and Mobility (AS 1428.1:2021) Load Rating: Class B (AS 3996:2019) Bicycle Tyre Penetration Resistant (AS 3996:2019)

### DuraDRAIN Heel Safe Galvanised Grate



1000mm L x 20mm H x 150/200mm D



Complies with the following industry standards:  
Slip Resistance: Wet Pendulum Class P4 (AS 4586) Designed for Access and Mobility (AS 1428.1:2021) Load Rating: Class B (AS 3996:2019) Bicycle Tyre Penetration Resistant (AS 3996:2019)

### DuraDRAIN Ductile Iron Grate



1000mm L x 20mm H x 150/200mm D



Complies with the following industry standards:  
Complies with the following industry standards: AS 4586; P2 Wet Pendulum Load rated to Class D (AS 3996:2019)

If you are after Revit files or additional information, get in touch with us for more details: [marketing@everhard.com.au](mailto:marketing@everhard.com.au)



Polymer channel warranty



Metal grate warranty



**MADE FROM 100% RECYCLED MATERIALS**