

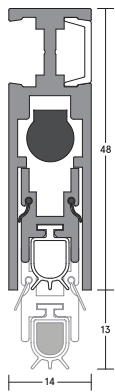
DROP SEALS

LAS8003 si HSS

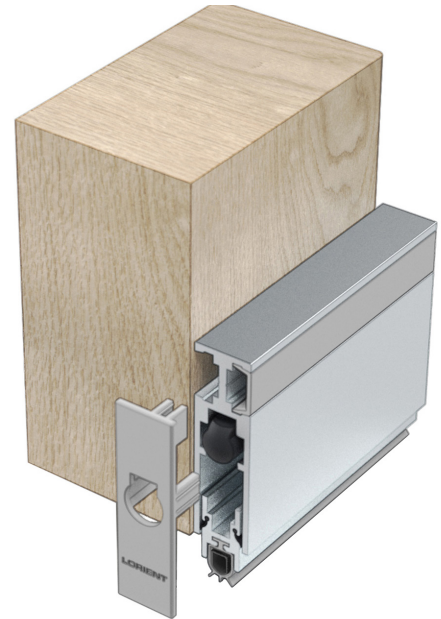
MEDIUM DUTY

This face-fixed or semi-mortised aluminium automatic drop seal features a silicone rubber gasket with intumescent core and internal fins. It is used to close the gap under single swing doors to maintain their acoustic, smoke and energy efficiency performance. The seal incorporates a high efficiency spring loaded mechanism that extends the seal as the door swings shut and automatically retracts it as the door is opened by just a few centimetres.

FIRE + SMOKE SEALS



LAS8003 si



LAS8003 si HSS

SYSTEM SPECIFICATIONS

Key benefits

- ▶ Effective acoustic sealing solution that can easily be retrofitted to existing door assemblies.
- ▶ Dual internal sealing fins enhance acoustic & smoke containment performance.
- ▶ Fixing points are fully concealed behind a click-fit cover strip.
- ▶ Quick and easy installation.
- ▶ May be fitted semi-mortised for a flush finish.
- ▶ Supplied with a fire rated silicone rubber gasket & colour matched push-fit end caps.
- ▶ Fully automatic, no power connection required.
- ▶ Simple adjustment to suit varying door gap requirements.
- ▶ Proven long term reliability.

Gap sizes

- ▶ Accommodates & seals gaps up to 13mm.
- ▶ Greater gaps can be sealed if used with a threshold plate.

Approvals

- ▶ **Fire:** Tested in accordance with AS1530.4 on proprietary AS1905.1 fire door assemblies for up to 4 hour rating.
- ▶ **Smoke:** Medium temperature smoke approvals for use on AS6905 compliant smoke door assemblies. Conforms with BCA Specification C3.4 smoke sealing requirements.
- ▶ **Sound:** Acoustically tested in accordance with ISO10140-2 and AS/NZS717.1 with ratings up to 37Rw on appropriate rated assemblies.
- ▶ **Bushfire:** Approved for use on proprietary fire door assemblies for Bushfire attack levels of Flame Zone (FZ) classification or less.
- ▶ **Durability:** Long term mechanical test, completing 100,000 cycles without failure.

Fixing method

- ▶ Face-fixed or semi-mortised. Fixing screws are supplied.

Standard lengths

- ▶ 435mm (may be cut back to 335mm)
- ▶ 535mm (may be cut back to 435mm)
- ▶ 635mm (may be cut back to 535mm)
- ▶ 735mm (may be cut back to 635mm)
- ▶ 820mm (may be cut back to 735mm)
- ▶ 920mm (may be cut back to 820mm)
- ▶ 1070mm (may be cut back to 920mm)
- ▶ 1220mm (may be cut back to 1070mm)
- ▶ 1400mm* (may be cut back to 1220mm)
- ▶ 1600mm* (may be cut back to 1400mm)

*Non-standard sizes do not hold test evidence for the approval for use. Speak to our Technical Team for advice.

Finishes

- ▶ Silver anodised aluminium, stainless steel end plates & grey silicone rubber gasket.