

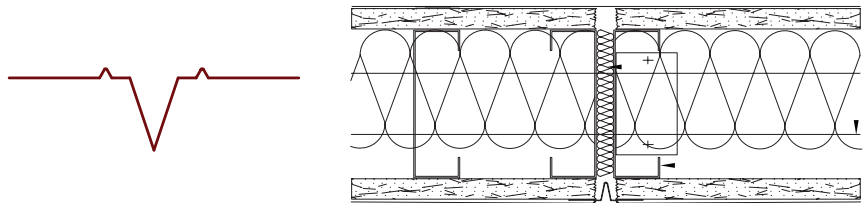
USG BORAL DRYWALL CONTROL JOINT

PRODUCT CATEGORIES: METAL CONTROL JOINT

Allowing for expansion in both walls and ceilings, USG Boral control joint has been designed for movement of up to 6mm in each direction.

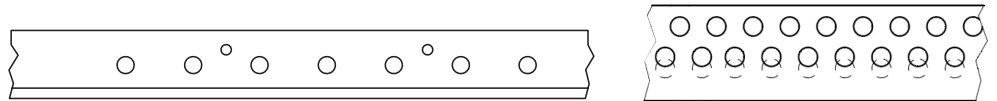
DIMENSIONS

Length: 3000 mm
 Dimensions: 11.5x48 mm
 Thickness: 0.45mm for steel and 0.75mm for Aluminum
 Perforations: Standard



PERFORATIONS

Standard - 2 Patterns



RAW MATERIALS

- Galvanized steel G90
- Aluminum Alloy 6063

STEEL GRADE

Yield stress, Fy 33 ksi Ultimate for steel
 Yield stress, Fy 28 ksi Ultimate for Aluminum

ASTM & CODE STANDARDS

- Metal Control Joint are produced to meet or exceed ASTM C645 and C955.
- Galvanized sheet steel meets or exceeds requirements of ASTM A-653.
- For installation & storage information refer to ASTM C1007 & C754

GREEN BENEFITS

LEED Credit MR 2 - USG Boral products are manufactured from coldformed steel. Steel is 100% recyclable, which helps divert debris from the waste stream.

LEED Credit MR 4 - USG Boral steel products have a minimum of 25.5% post-consumer recycled content, and 6.8% pre-consumer.